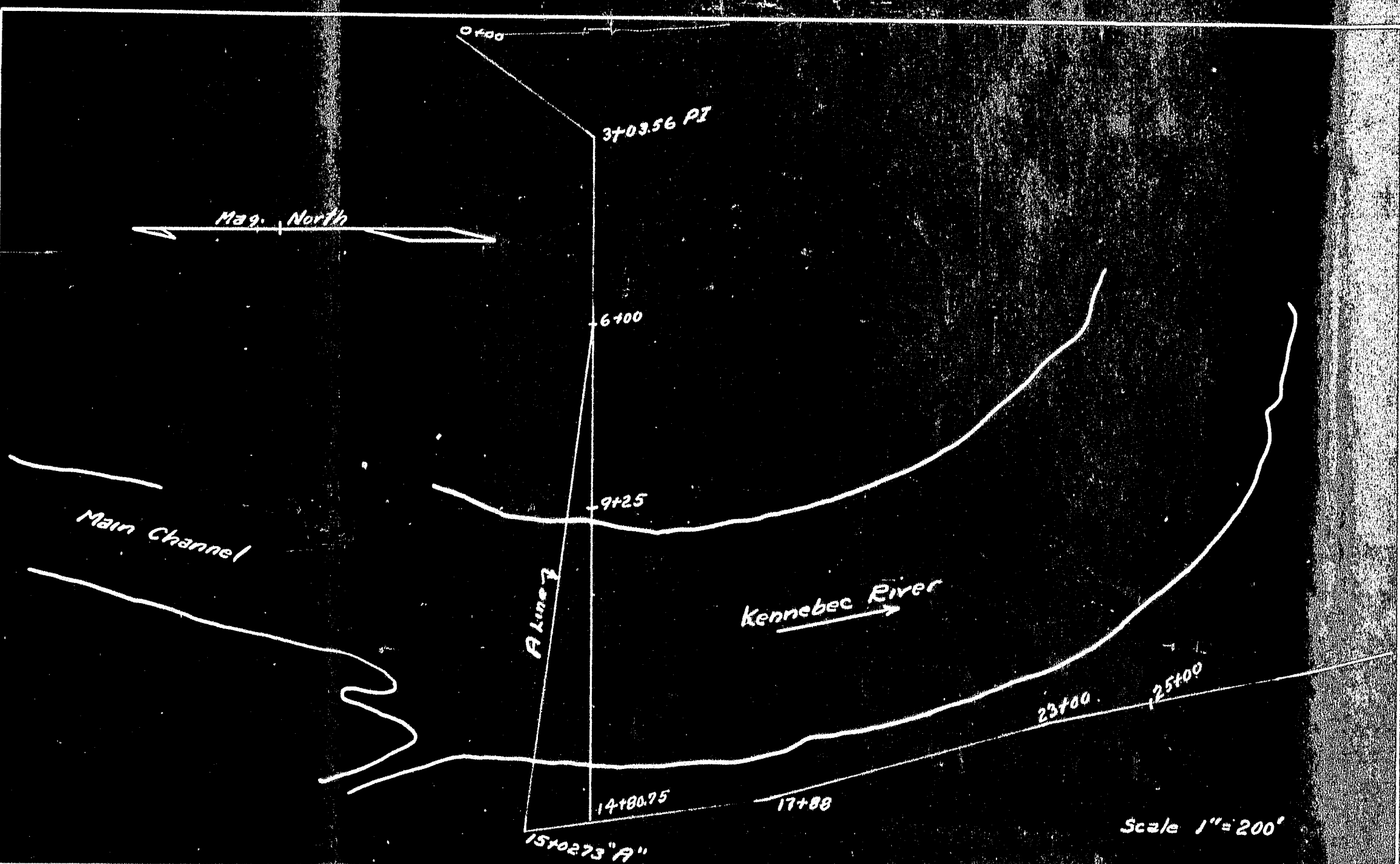


Curve Data  
 $I = 53.57^\circ$   
 $D = 111.22'$   
 $T = 264.56'$   
 $L = 788.94'$

Substructure - Abutments No. 1 and 2. Breastwall dressed, mortar masonry - Wings split granite random courses laid in mortar. All in good condition. Pier No. 1. Dressed mortar masonry. The nose settled 6" in 1936. Some rip-rap placed in front of nose. Pier No. 2. Dressed mortar masonry in good condition.  
 Superstructure - Two thru pin connected trusses and one pony truss. Floor 4" plank with 1" asphalt plank. Floor in very poor condition.  
 Approaches - Surface treated gravel.  
 Foundation - River gravel. Sounding No. 1 on 6. Sta. 9+43, easy penetration 2' below water. 1/2 per blow to 14' below water - sounding stopped there due to lack of equipment.  
 Stream - Extreme high water 1936 from local information Elev. 92.2, USGS flood mark March 20, 1936 Elev. 91.43. High water 1970 from driftage Elev. 86.4.



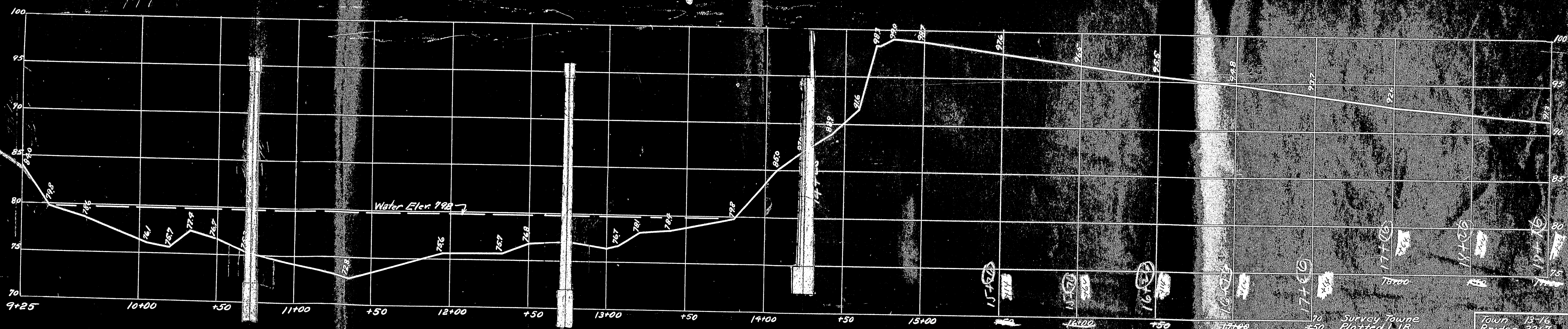
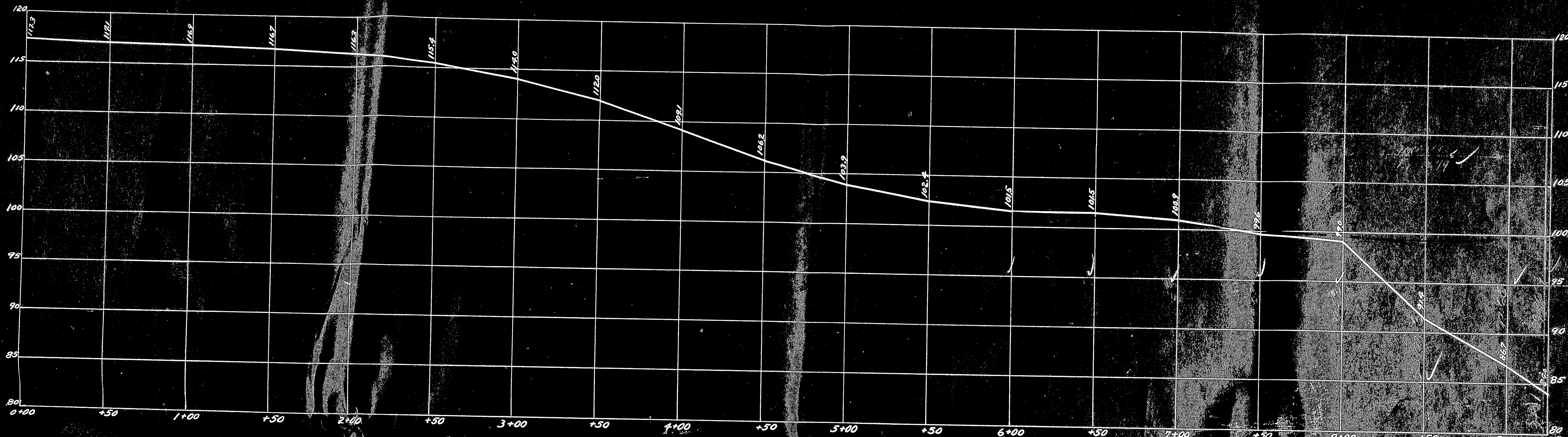
Survey Towns  
 Plotted L.I.B.  
 STATE HIGHWAY COMMISSION  
 Bridge Division  
**EMDEN-SOLON BRIDGE**  
 over the  
**KENNEBEC RIVER**  
 between the towns  
**EMDEN-SOLON**  
**SOMERSET CO.**  
**SURVEY PLAN**  
 Sheet of Augusta, Me. Sept. 1940





Survey Towne  
Plotted LJB  
STATE HIGHWAY COMMISSION  
BRIDGE DIVISION  
TOWN 13-16  
BRIDGE 2267  
**EMBDEN-SOLON BRIDGE**  
over the  
**KENNEBEC RIVER**  
between the towns of  
**EMBDEN-SOLON**  
**SOMERSET CO.**  
**SURVEY PLAN**  
Sheet of Augusta, Me Sept 1940





PROFILE  
 Hor. 1"=30'  
 Vert. 1"=5'

Survey Towne  
 Plotted LJB  
 STATE HIGHWAY COMMISSION  
 BRIDGE DIVISION  
**EMDEN-SOLON BRIDGE**  
 over the  
**KENNEBEC RIVER**  
 between the towns of  
**EMDEN-SOLON**  
**SOMERSET CO.**  
 SURVEY PLAN  
 Sheet of Augusta, Me. Sept 1940